

selected  
by Ingrid Adriaenssens

# selected

by Ingrid Adriaenssens

Switches take up a small yet prominent place in our interiors.

Wouldn't it therefore be splendid if they were not merely functional, but also complemented the interior design? Or, even better, worked as wall ornaments? For the past few years, goldsmith and jeweller Ingrid Adriaenssens has been practising the age-old technique of enamelling.

When Lithoss, a company specialising in high-end switches, wished to launch a new range of enamelled controls with copper – an ideal base for manual enamelling – as the main material Ingrid Adriaenssens was given carte blanche in terms of colours and artistic vision.

TEXT BY NATASJA ADMIRAAL

Manual enamelling is a real craft. It involves a great deal of experimentation, irrespective of the method used. According to the designer, this is actually the challenge of enamelling: you can never completely master it so it remains an exceptionally fascinating journey. In this case the copper's coefficient of expansion versus the enamel needed to be considered to prevent the copper from buckling during the baking process. When designing a switch it is not only important to think about the control button, but also about the cover plate concealing the electric system.

Ingrid Adriaenssens chose to work with the high-quality enamel powders of Thompson Enamels, known for their purity (they are lead-free) and the rich, intense colour range. She drew inspiration from the enamel's softness, texture and depth, and in doing so respected the base material; the enamel on the cover plate is transparent, letting the magnificent coppery base shine through. For the control button, a significantly smaller surface, she worked both with opaque enamel and transparent enamel for the more important drawings.

The collaboration between Ingrid Adriaenssens and Lithoss shows how the ancient art of enamelling has contemporary, everyday uses and an unprecedentedly long lifespan. These are hand-made designs. For now, the series consists of four selections, named after great historical citizens of Ghent. Subtle and elegant, the switches are not too dominant but provide an artistic added value to the surroundings. It is a revaluation of a time-consuming discipline; the art of enamelling is literally and figuratively seen in a new light.

Ingrid Adriaenssens's Gallery – Workshop is situated in the very heart of Ghent. Using her drawings as points of departure, Ingrid Adriaenssens designs her unique and timeless jewels with fire and warmth. To do so, she uses the time-honoured crafts of forging and casting. She draws with metal as it were in her very own language of form. She uses both traditional and contemporary skills and techniques in bringing together a variety of materials ranging from the delicacy of gold, the sincerity of silver, the richness of precious stones and the warmth of natural fibres, etc. You can view her permanent collection at her workshop but you can also ask her to transform your special wishes and feelings into a fine piece of jewellery.



# Willem Hugonet

Guillaume (Willem) Hugonet (? - Ghent, April 3, 1477) was Chancellor of Burgundy under Duke Charles the Bold. As the most senior official he was one of the most powerful figures of his time.

Hugonet was from Mâcon in Burgundy where he was initially a judge. Together with the duke and his officials he came to Flanders at a time when the county had become the central area of the Kingdom of Burgundy.

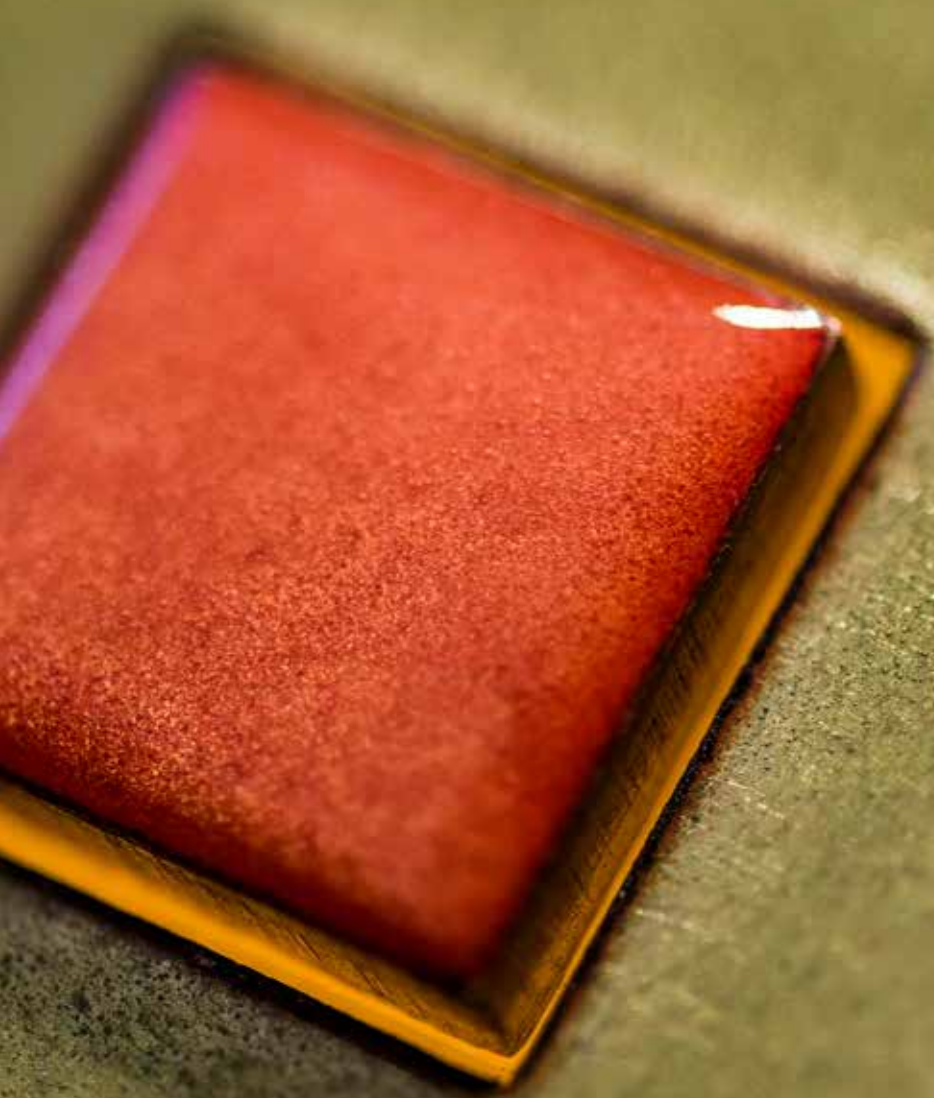
He married Louise de Laye who bore him one daughter, Louise Hugonnet de Saillant, and two sons Karel Hugonet (died in 1493) and Willem Hugonet (1472-1537). In 1476 he bought Middelburg which went on to flourish.

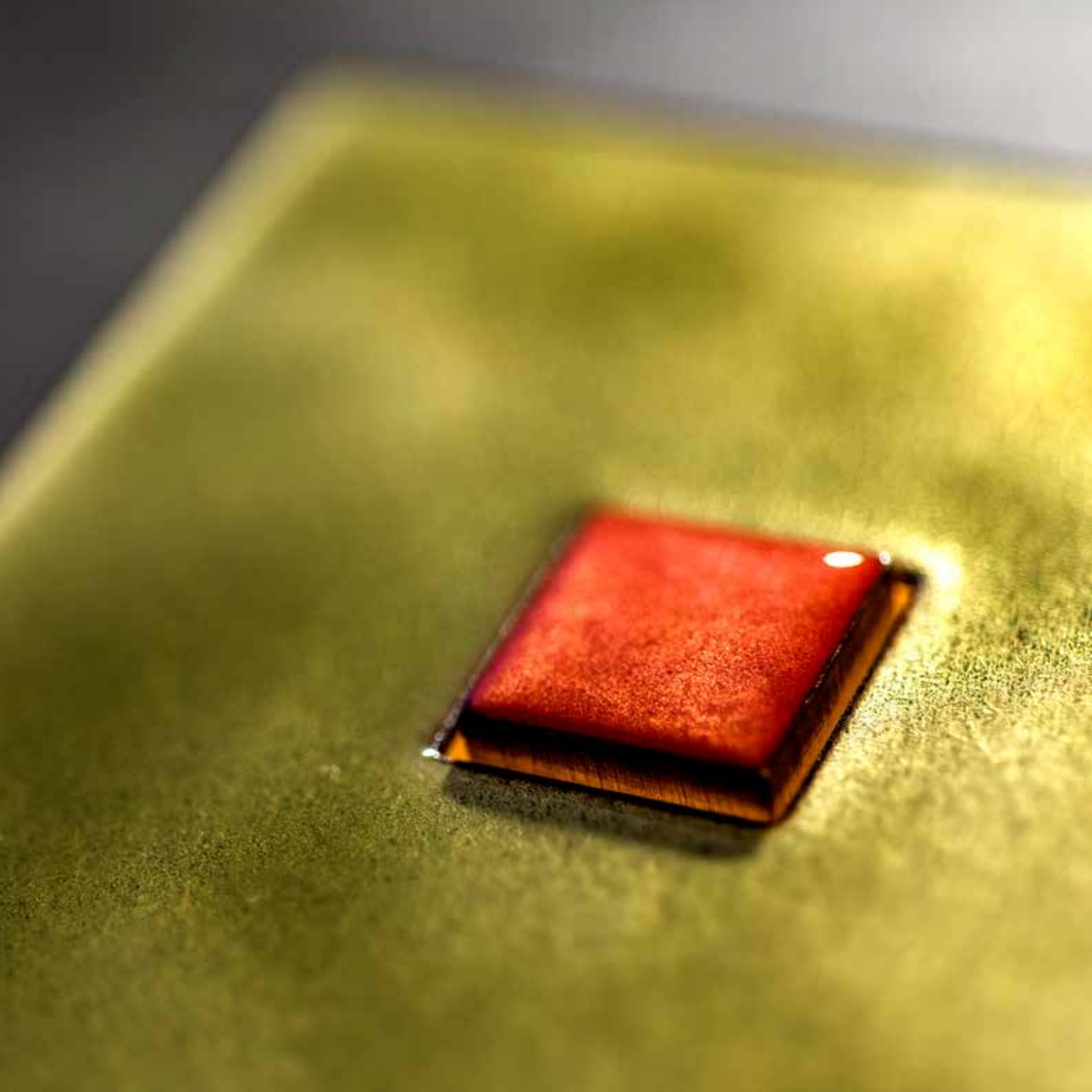
---

Hugonet	Technology	Ref.
Olive Green + Pink + Gunpowder Black	24V pushbutton + amber led	la8180



Hugonet 1T





# Louis Montigny

Louis Montigny (1835-1914), who lived in Ghent, belonged to the list of liberal jurists which influenced the law faculty in the middle of the 19th century. As chairman of the committee of inquiry into the state of primary education in Belgium, he played an important part in debates over the issue during the First School War.

In 1859 he registered at the Ghent Bar and became an appeals court lawyer but two years later he transferred to the East Flanders provincial government where his father was county clerk.

In 1861 he was appointed Head of Department in the cabinet of the Liberal governor Edouard De Jaegher. In 1880, under Governor Léon Verhaeghe de Nayer, (also a Liberal), he was assigned the post of Director of the Governor's Cabinet.

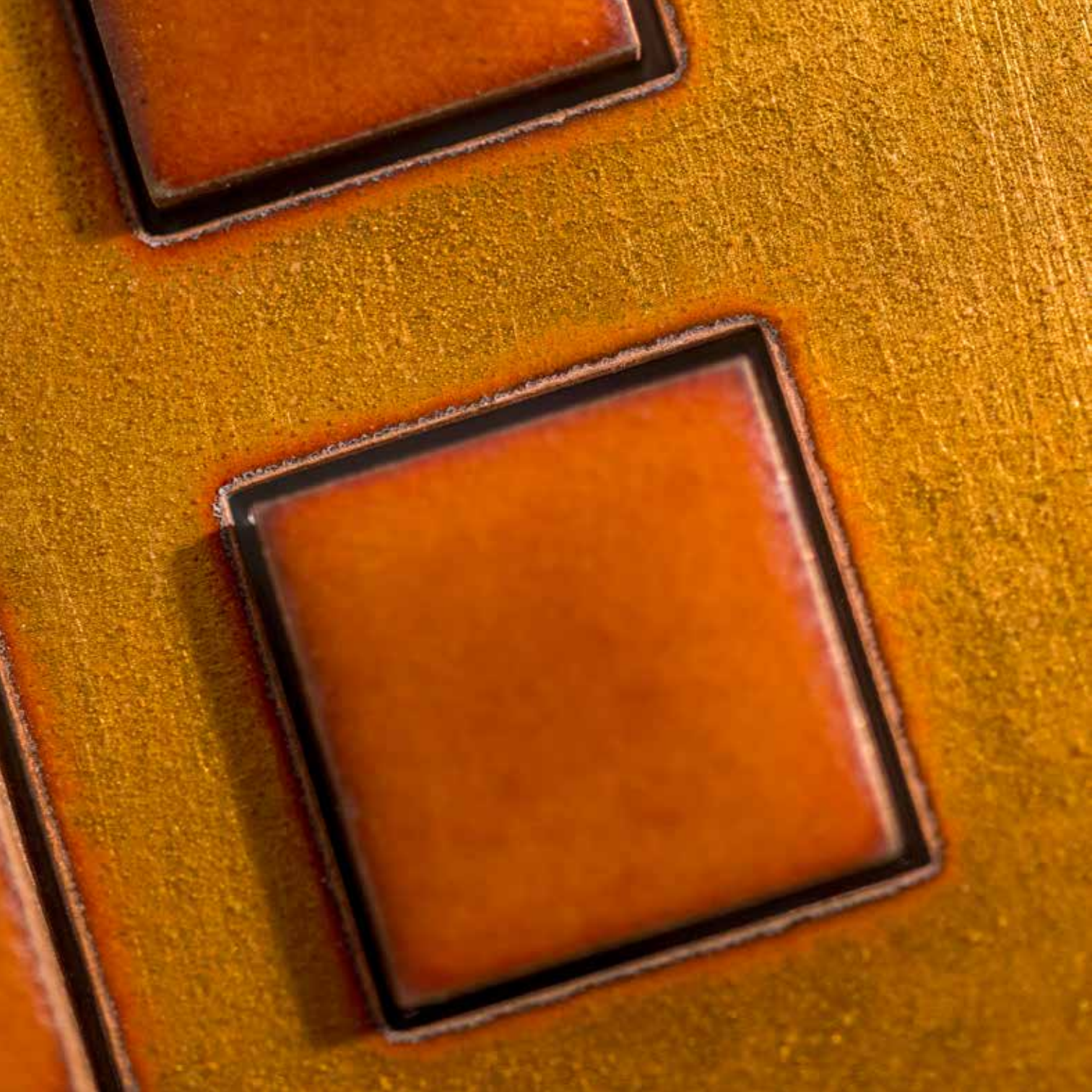
---

Montigny	Technology	Ref.
Wax Yellow + Orange + Bronze Antique	24V pushbutton + amber led	la8481





Montigny 4T





# Jan Borluut

Jan Borluut was born into a rich patrician family of wool merchants, members of which continuously held magistrate positions in the city of Ghent from the 13<sup>th</sup> to the 16<sup>th</sup> century.

He was related to Elisabeth Borluut, who, together with her husband Joos Vijd, commissioned the creation of the famous Ghent Altarpiece (1432), which now resides in the 'baptist chapel' from

the Saint Bavo Cathedral in Ghent. On the façade of a romanesque manor located at the 'Korenmarkt' in Ghent, also called the 'Borluutsteen', you can see the family crest: three running deer.

---

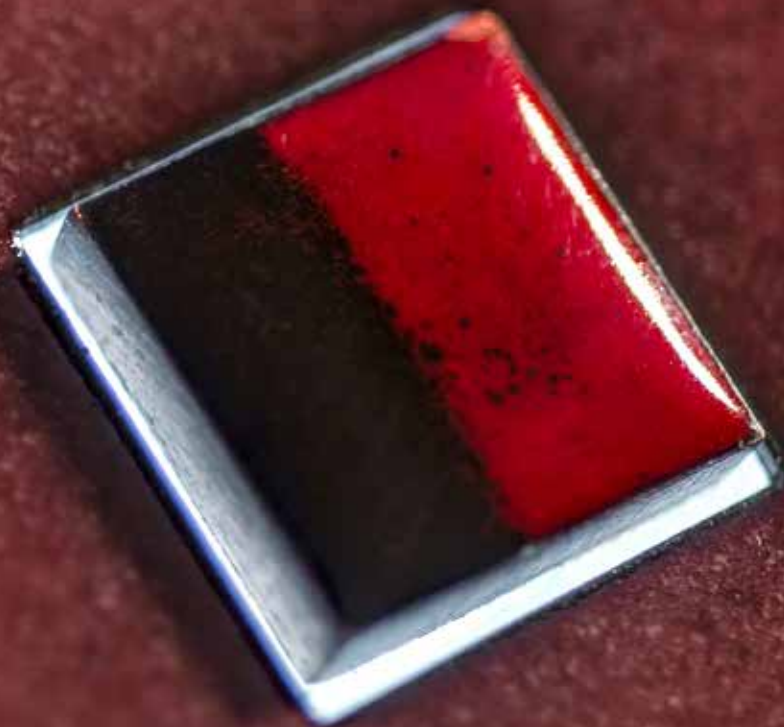
<b>Borluut</b>	<b>Technology</b>	<b>Ref.</b>
Chinois Pink + Peat Brown + Nickel	24V pushbutton + white led	la7182

---



Borluut 1T





# Jacob van Artevelde

Jacob van Artevelde (1290 – 1345), also known as the Wise Man and the Brewer of Ghent, was a Flemish statesman and political leader.

Jacob van Artevelde was particularly known as a rebel leader in Ghent. During the Hundred Years' War between France and England, France ordered all its occupied territories to cease trade with

England. But Van Artevelde disobeyed the orders and resumed the wool trade with England, making him a Flemish/Belgian hero respected to this day.

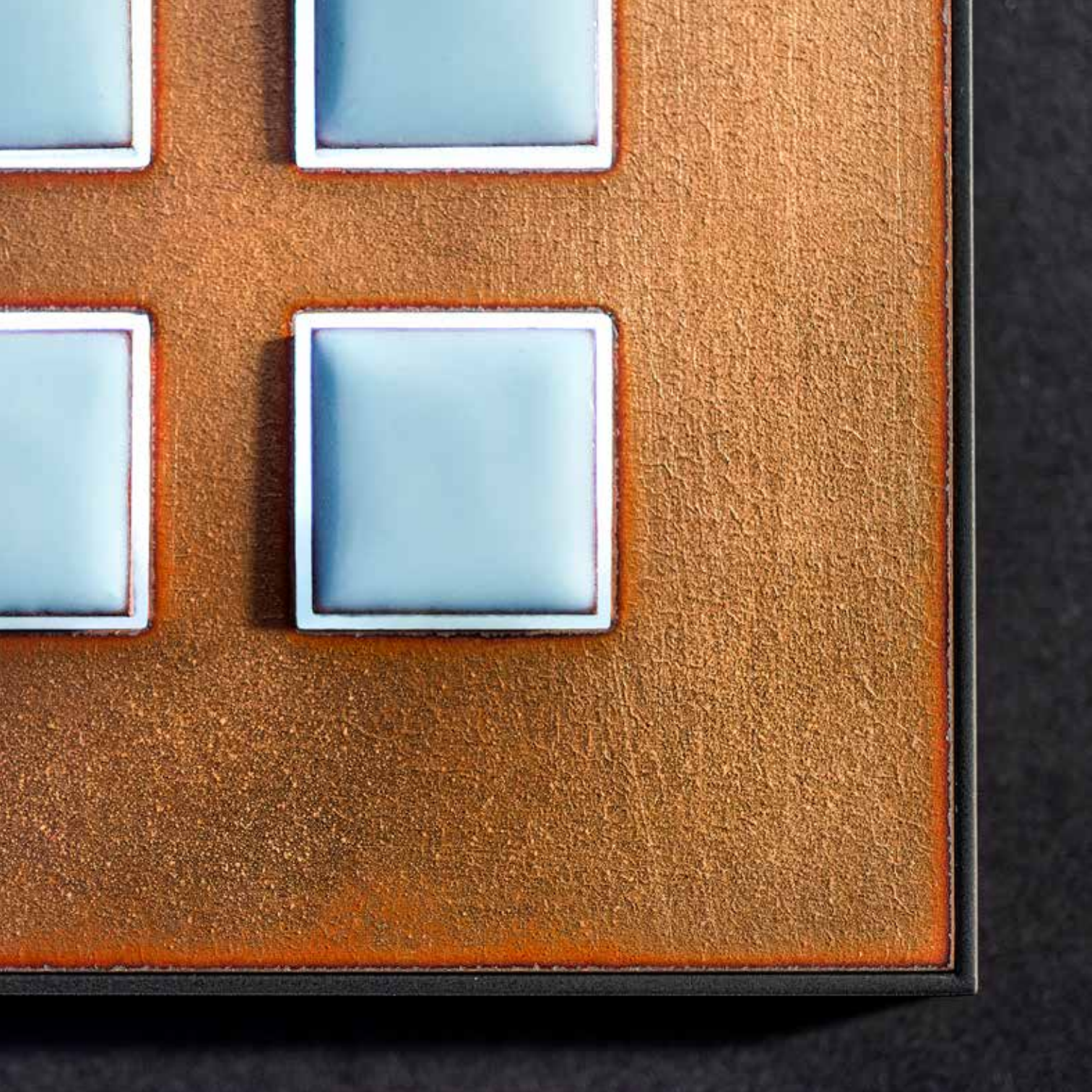
---

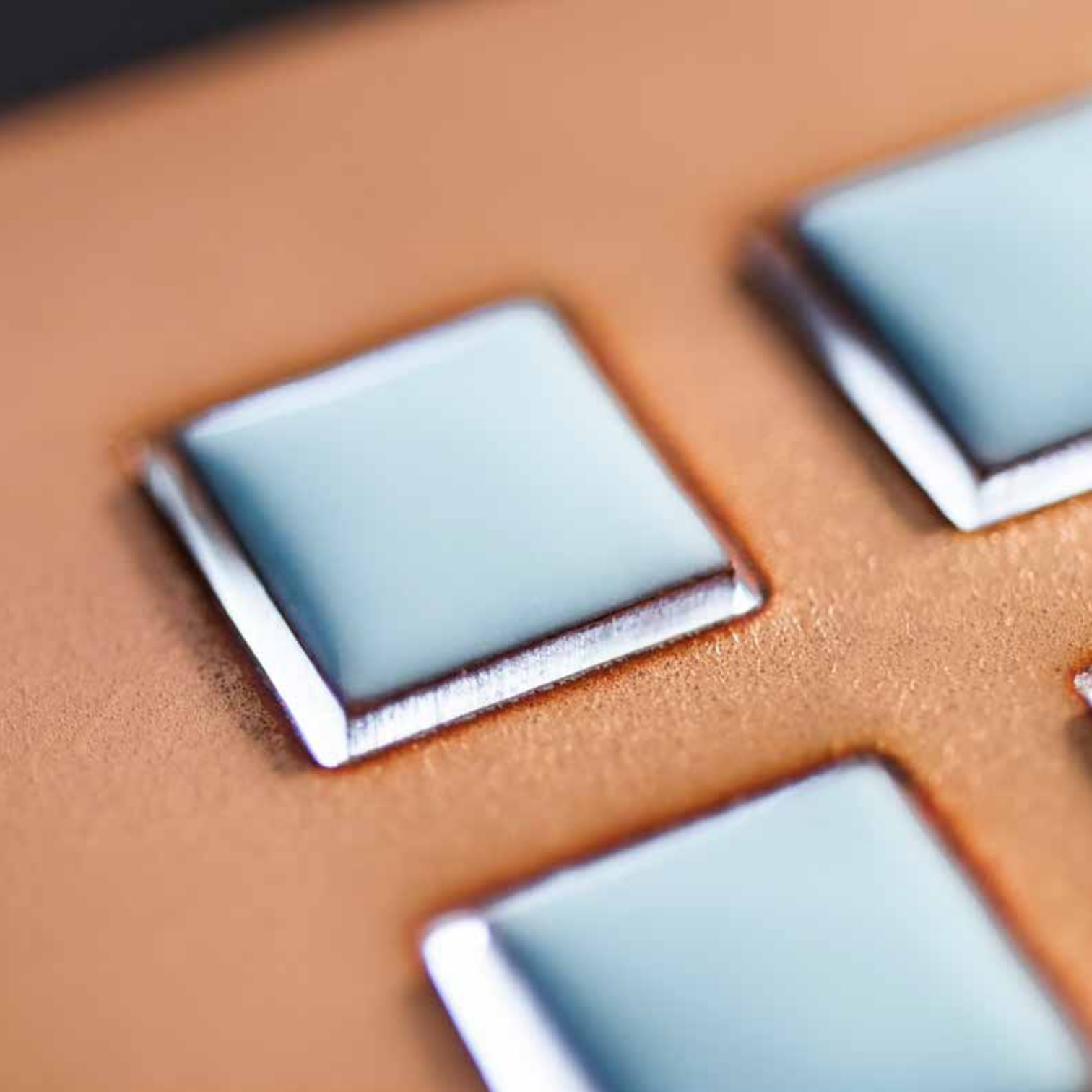
Artevelde	Technology	Ref.
Clear + Ozon Blue + Matt Black	24V pushbutton + white led	la7483

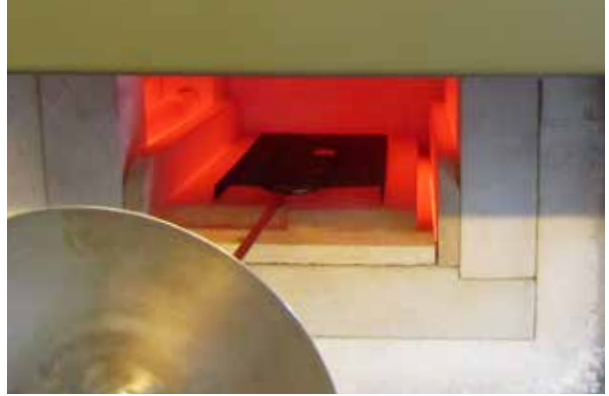




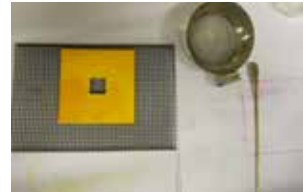
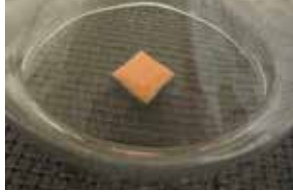
Artevelde 4T

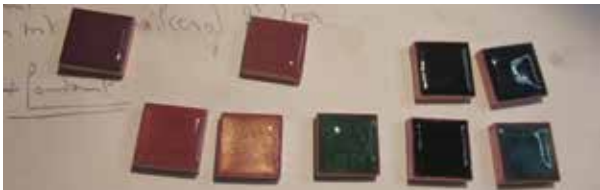
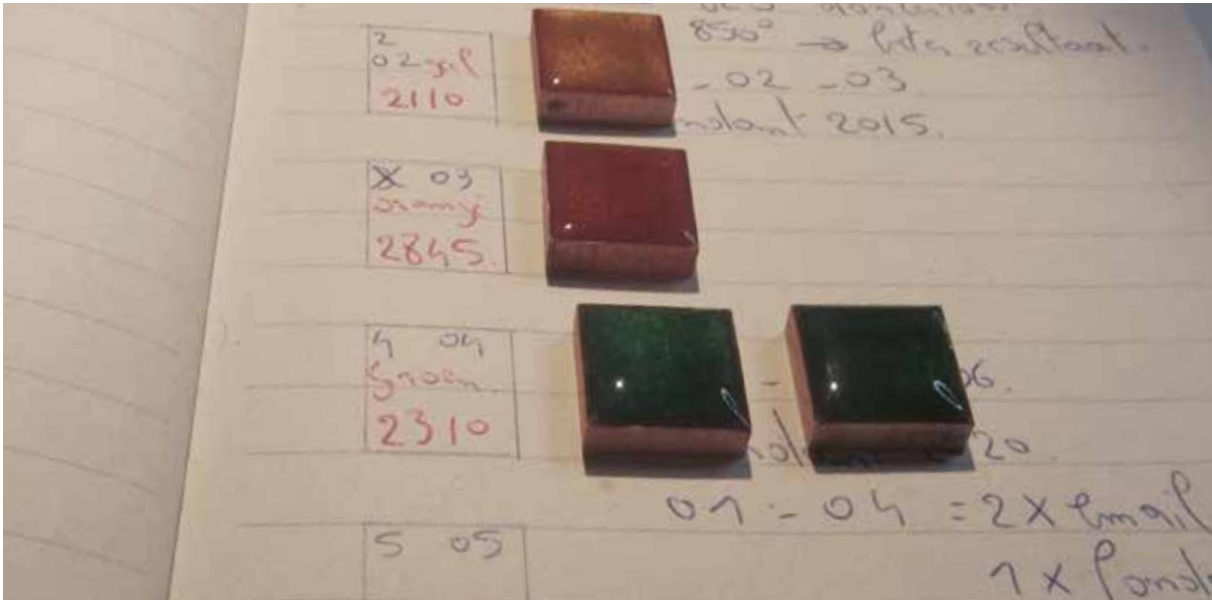




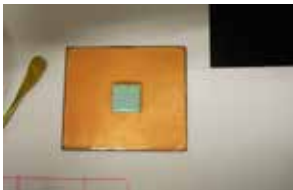
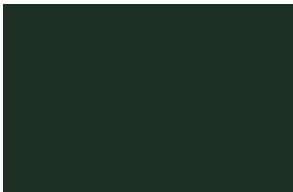


Process





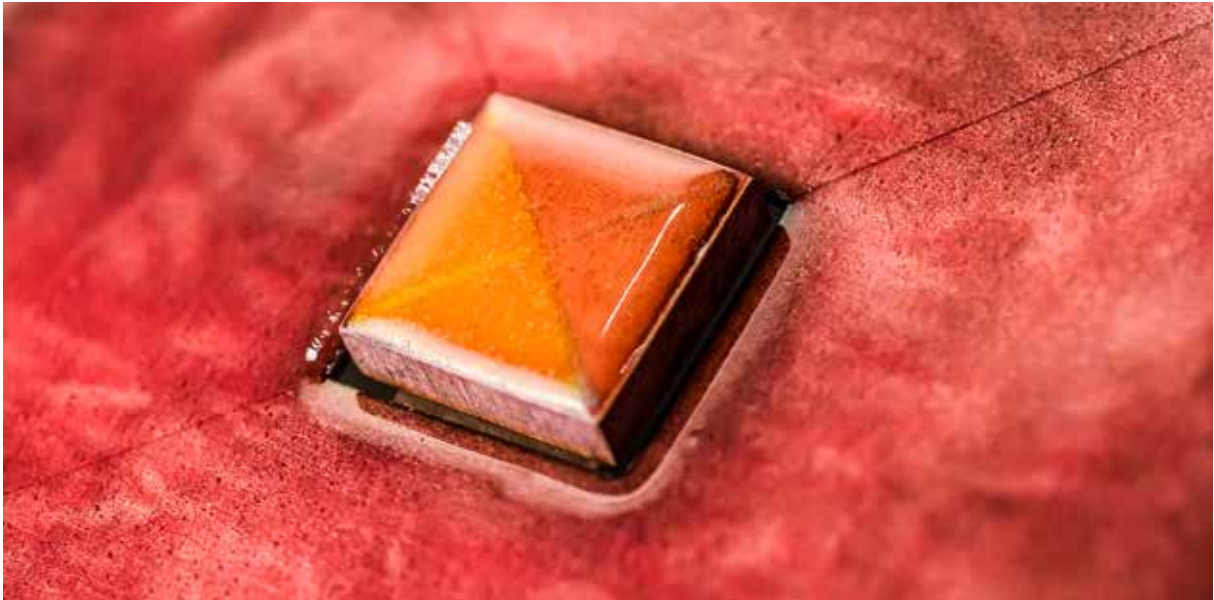
### Selection





Inspiration







[www.lithoss.com](http://www.lithoss.com)