



05 Project in the picture:
Hotel Damier



09 Fair: ISE -
winner most beautiful stand



10 Project:
Private apartment

03 Introduction

09 Fair: ISE - 1st place
for the most beautiful stand

16 Project:
Eperon d'or

04 New Lithoss
building

10 Project:
Private apartment

18 New product:
Lithoss Flush

05 Project:
Hotel Damier

12 ARPI:
Floor sockets
and so much more

20 Brand New:
ARPI Catalogue

08 Product update:
VOID SQUARE 1 more reference

14 Product update:
New MK



INTRODUCTION



We are very proud to present you our new Lithoss magazine and we have a lot of news to tell you. You can read all about it in this magazine.

The greatest innovation is of course our move to a brand new building that also has the look that fits a high-end brand like Lithoss. But we have been busy working on other things as well, which makes we now boast a wonderful collection of floor sockets; ARPI.

This is an existing range we have taken over from AMPI and fully integrated into Lithoss. We wish you a great time reading this magazine and we hope you get lots of inspiration from it.



New Lithoss building

You may have noticed already, but in the meantime we have moved and settled in a completely new building. This move was really necessary as Lithoss was really bursting at the seams at its previous location. We are also very pleased that all our employees have followed us and moved along with us to Pittem. All Lithoss's activities and departments have now reunited under 1 roof.

Our new building is located in a completely new SME allotment with very easy access. Our new building is fully automated with KNX which allows us to show all the advantages of our integrated KNX sensors.

The first step we took is getting Lithoss's production fully operational in the new building, the next step is to set up the showroom so we can show our beautiful products in all their glory.



Our new address:

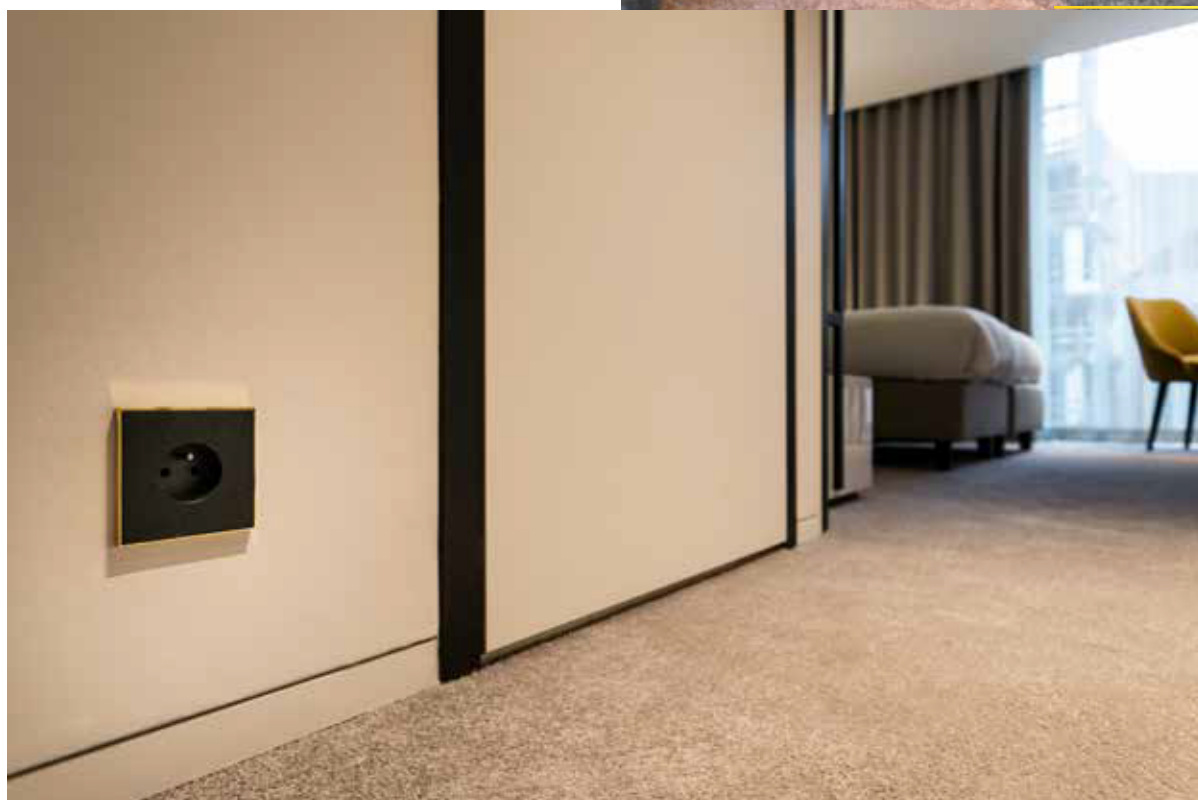
Lithoss NV
Moortelmeers 23
8470 Pittem



Project ■ Hotel Damier

A hotel project we are very proud of is hotel Damier in Kortrijk.

We have chosen our SELECT series as the basis in combination of brass with texture black, where the basic material of the black texture plate is also brass, which makes the engraving is again in brass after the laser engraving which forms a very beautiful whole this way.



Some other references from recent hotel projects where you can find Lithoss since recently:

- Nana Princess Hotel - Crete (Greece) :
www.nanaprincess.gr
- Puro Hotel - Krakow (Poland) :
purohotel.pl/en/krakow



Product Update: Void Square 1 more reference

As from 1 January 2019, we will replace the 3 different references for the different interfaces (frames) with 1 single new reference. That way you do not have to choose in advance which module you are going to buy from which manufacturer, but you get all 3 interfaces supplied in the box. This means a huge advantage for stock management, both for us and our customers, and there no longer any risk of ordering the wrong reference.



In practice, it will be as follows:

A(Bticino) + **B** (Legrand/Hager/Peha) + **C** (Vimar - Eikon/Plana)

are thus replaced by **E**(All in one)

Some examples:

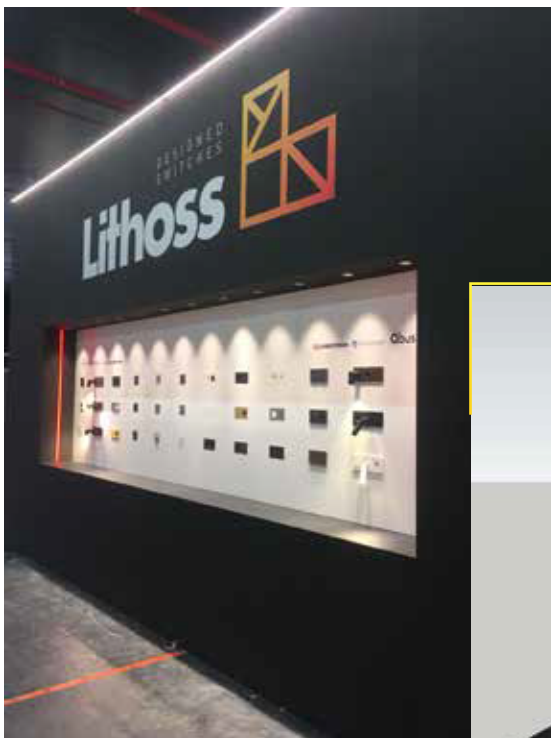
- Vo0**A**02 becomes Vo0**E**02
- Vo0**B**0**B**17 becomes Vo0**E**0**E**17
- Ni440**C**0**C**14 becomes Ni440**E**0**E**14



Looking back at ISE fair

Our participation in the ISE fair in Amsterdam was more than successful. Our attractive stand attracted a lot of attention and, moreover, we were granted the award for best stand from the organization in collaboration with AV magazine!

Here is the footage of the official ceremony:
www.youtube.com/watch?v=6uomjA4yKCE



Project: Private apartment





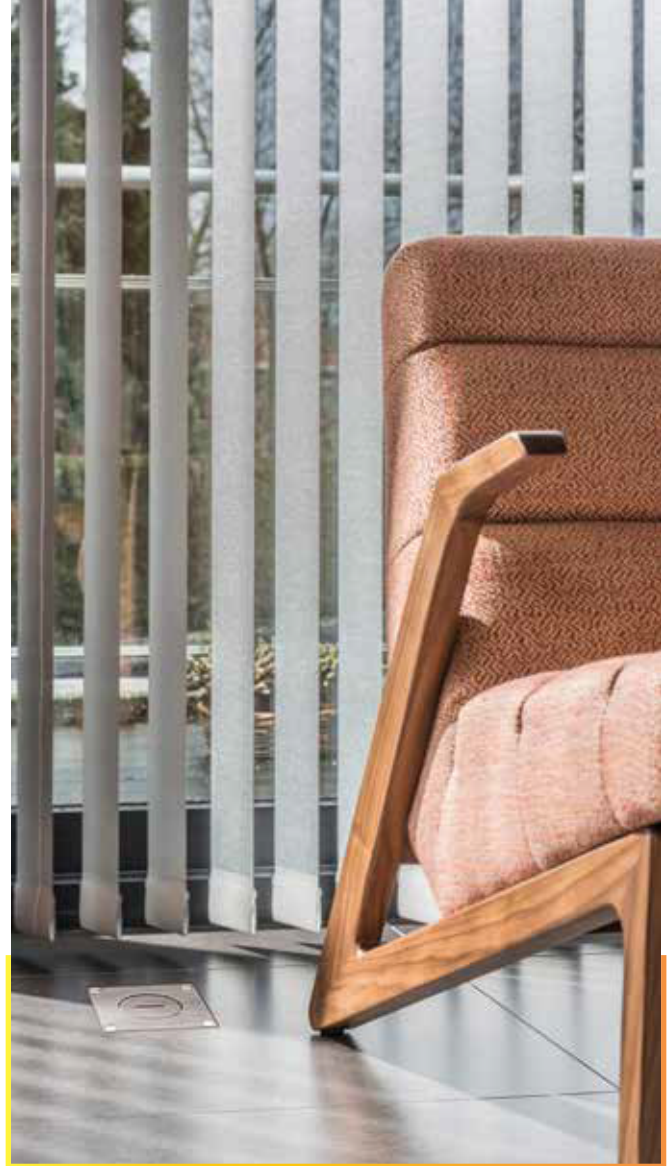
ARPI: floor sockets and so much more

Our customers have often asked us if we could provide them with floor sockets as well. And yes, as of April this year, we have included ARPI – an extensive and beautiful product family of floor sockets – to our range. ARPI is a renowned brand of floor sockets that has been on the market since 1983.

An ARPI floor socket is a refined product of great quality and is recognized for being robust and durable. These are, of course, values Lithoss also considers to be of paramount importance, which made the integration of ARPI within the Lithoss range go very smoothly.

ARPI is therefore an integral part of the Lithoss collection and is an equal player among the Select, Cockpit, Void, ... series.

The ARPI collection consists of two series, an IP64 and an IP66 variant. In both series there is a version available in stainless steel and one in brass.



IP66 series	IP64 series
Indoor or outdoor installation	Indoor installation only
IP66/IK10 (see description of the classes)	IP64/IK10 (see description of the classes)
All types of floors (concrete screed or hollow floor)	Installation in concrete screed
Recessed or built-up installation	Recessed installation
Box coupling (pin-hole connection)	Box coupling (pin-hole connection)
Price: stainless steel (ref AR7161301) = 89 EUR	Price: stainless steel (ref AR6161301) = 69 EUR

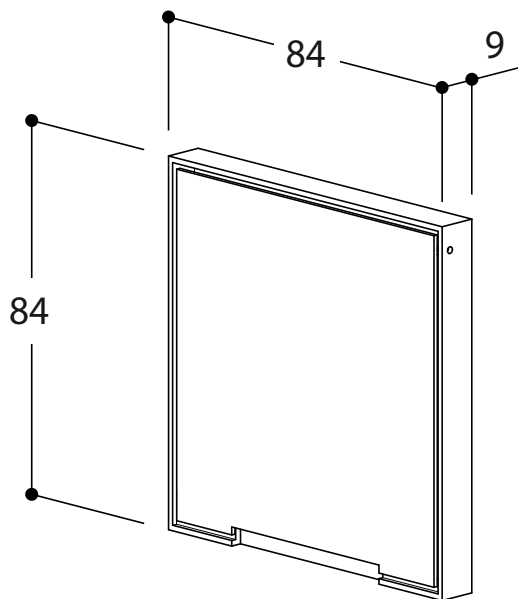


Product update: Void MK

The VOID MK was completely redeveloped, the design was the only thing that was more or less retained. This makes the new MK somehow sleeker than its predecessor, and is (for the time being) only available in a white or black finish.

Especially the functionality and operation were thoroughly revised, which makes it now always closes smoothly and flawlessly. To that end, magnets are now used instead of the torsion spring.

The Void MK may come with a standard socket (FR/BE or EU) but there is also a version with a vacuum connection. This way, all connection have the exact same look, which creates a nice and quiet whole in your interior, typically Lithoss.







Project : Eperon d'or

In places and interiors where the layout changes regularly, it often happens that the sockets are in the wrong place, or that they are no longer accessible at a given moment. Floor sockets therefore offer a nice alternative to remedy this problem.

This is certainly no different in a museum, which is why ARPI floor sockets can also be found in numerous museums. Eperon d'or is a nice example. This architectural gem in genuine art-deco style houses the brush & shoe museum in the city of Izegem.

More information: <https://eperondor.be>





New product: Lithoss Flush

We will admit it right away, the inspiration for our wonderful trimless (flush) solution comes from our big sister TAL. As specialists in trimless solutions for lighting fixtures, they helped us develop the Lithoss Flush range, which led to a very successful end result. The Lithoss Flush kit allows you to seamlessly work the most popular Lithoss families (Select, Squares, Void, etc. but also the cockpit) in every wall.

With the Lithoss Flush installation kit, your switches and the like are even more integrated into the architecture of the house, as they become one with the house.





Brand New: New ARPI catalogue

To put our new ARPI collection in the spotlight, we have created a beautiful, brand new brochure in the style of the Lithoss catalogue.

This new brochure contains not only all the references, but also the accompanying product photos, beautiful realization photos and the technical explanation at the back.

Request your copy or take a sneak peek at:

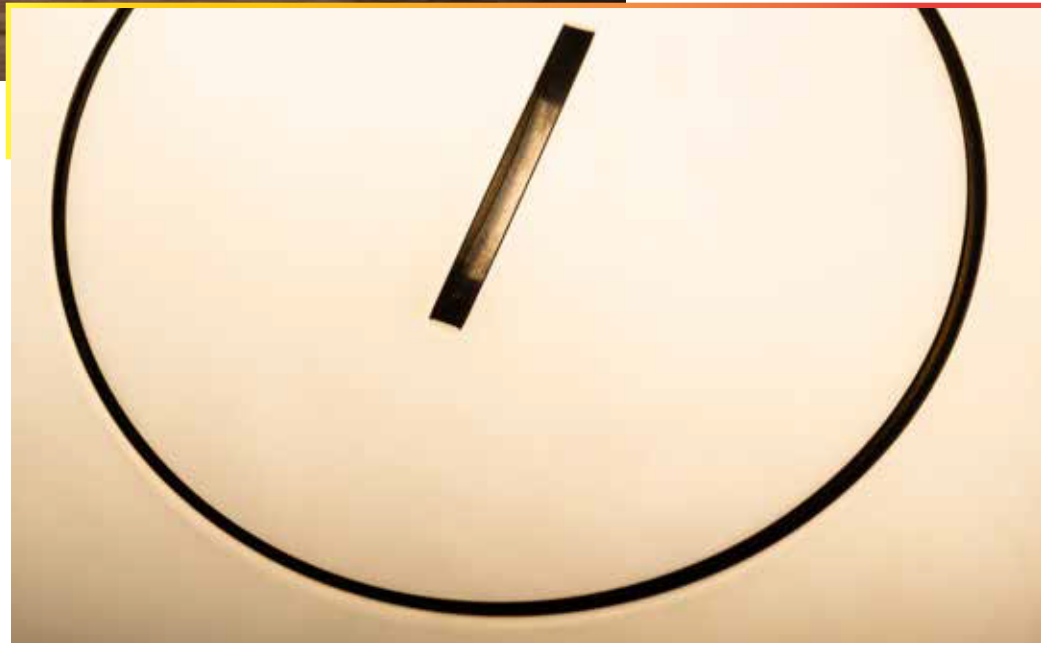
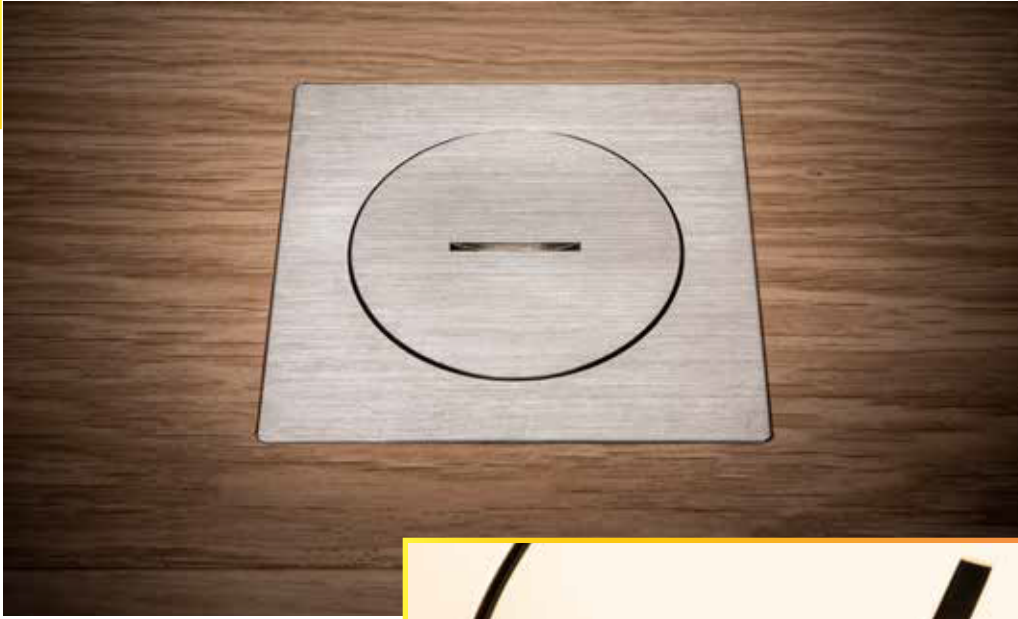
www.lithoss.be/images/uploads/pdf/15574_Lithoss_ARPI_-_LR.PDF





ARPI





SOPHISTICATED POWER

INTELLIGENT SIMPLICITY

WIDE RANGE FLEXIBILITY

TECHNOLOGY

FUNCTIONAL, PURE & HIGH END